

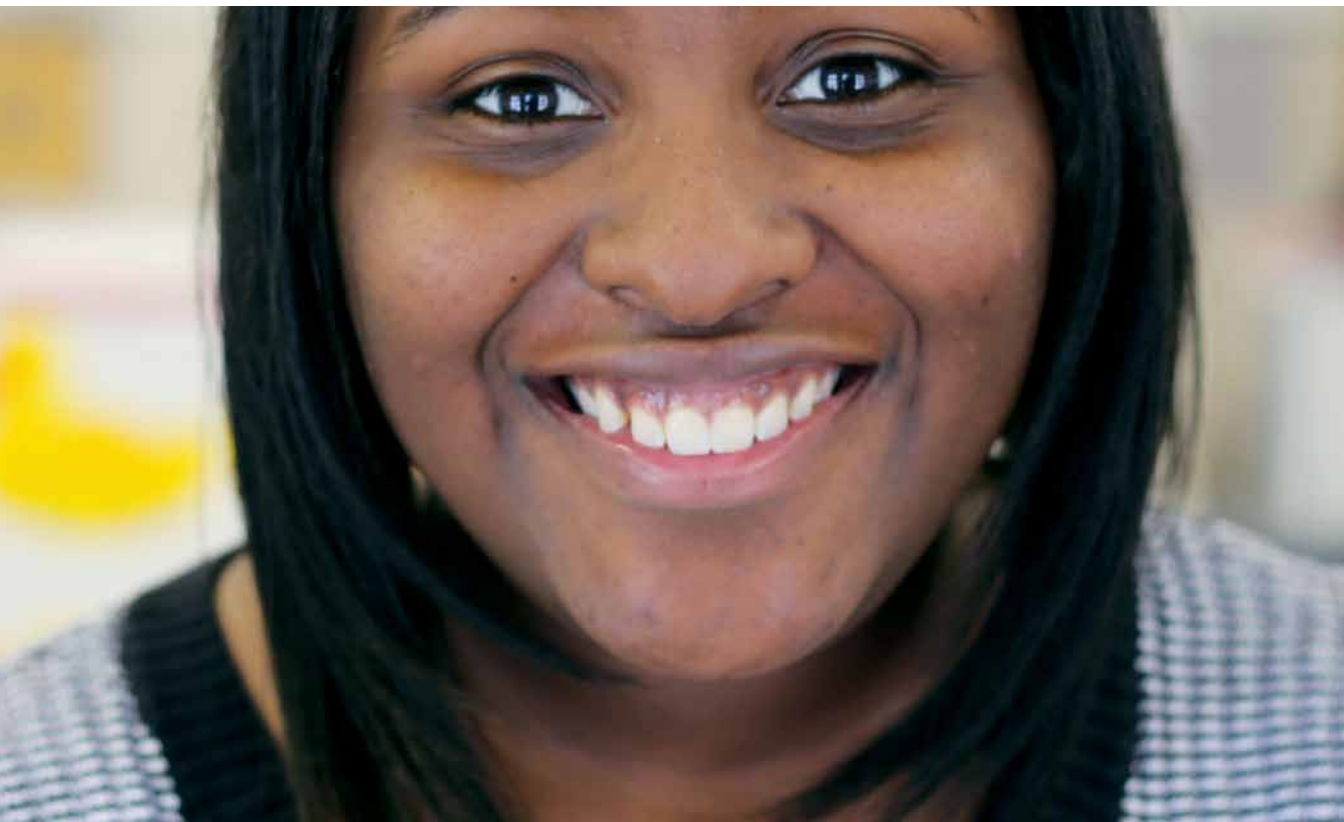


Unlocking the power of human potential





Unlocking the power of human potential





Unlocking the power of human potential



Unlocking the power of human potential

**Ounce of Prevention Fund**  
**Annual Report 2014**



## Inspire minds. Change lives.

From President Barack Obama's 2014 State of the Union address to a steady influx of news stories, the drumbeat for transformative change in early education is growing louder every day. And as more Americans recognize the role early childhood education can play in breaking the cycle of poverty, the time is ripe to capitalize on this energy.

Leading our field with program, policy and research expertise, the Ounce of Prevention Fund is uniquely positioned to shape this national issue. For more than 30 years, we have steadfastly pursued a single goal: to increase the access to and quality of early childhood education that unlocks the potential within children living in poverty. We are pleased to report significant progress in achieving this goal this year.

We continue to build solutions designed to reach more children and families in need than ever before, broaden our impact and drive greater outcomes. We are enhancing the skills of early childhood professionals, empowering parents to become leaders of their families and communities, and coaching partners and influencing policymakers.

We feel great urgency in our work: More than 6 million young children in poverty are counting on all of us to help them achieve their dreams. In addition to those we serve directly, we touch the lives of all children and families living in poverty by building the tools and supports to effect systemic change.

## President & Chairman of the Board's Letter

We know that we can't do it alone. We are proud to partner with other advocates, experts and researchers; with local, state and federal governments; with community-based programs and national organizations; and with business leaders, philanthropists and all champions for young children.

In the coming pages, we highlight recent projects to improve quality, to reach more children and families and to drive greater impact. We are grateful for your ongoing support and hope you will continue to join us in launching the dreams of children, families, communities and our nation.



Diana Mendley Rauner  
President



Anne Lea Tuohy  
Chairman of the Board





# 30 years

of professional  
development for home  
visitors in Illinois

# 27,000

children and families nationwide  
served by center- and home-  
based early learning professionals  
developed by the Ounce

### CURRENT PROFESSIONAL DEVELOPMENT IMPACT

## 1,300

home visitors  
in Illinois



## 2,400

children and  
families served



### PROJECTED IMPACT OF NEW ONLINE PROFESSIONAL DEVELOPMENT PROGRAM

## 20,000

home visitors  
nationwide

## 1.5M

children and  
families served



# 800

program leaders,  
supervisors and  
home visitors provided  
feedback and data  
for the creation of the  
online program



# 90%+

percentage of home  
visitors in Illinois  
developed by the Ounce



## Our Stories: Building a Stronger Early Childhood Workforce

*As a home visiting supervisor at the Jefferson Area Children's Health Improvement Program, Juliana Weaver provides vital support to home visitors working directly with children and families in need. Ten home visitors, each with a caseload of up to 25 families, rely on Juliana—a responsibility she does not take lightly. "I miss working directly with families and watching kids grow up," she says, "but this gives me the opportunity to pass to people some of my experience."*

*Juliana's charge is to give her home visitors the structure, training and resources to excel at their jobs and better serve the children in their care. Home visitors become a part of families' lives, which makes their jobs incredibly rewarding but also incredibly challenging. Juliana sees that struggle every day in the home visitors she supports. For every home visiting success story, there is a different family in crisis. The home visitor must rise above the crisis to help the parents build strong bonds with their children.*

*Juliana works tirelessly to find professional development opportunities that prepare her home visitors for the new challenges that come up daily when working with families. She seeks out training that focuses on how to structure visits and build partnerships with families to promote their self-sufficiency.*

*Juliana is one of the many home visitors across the country providing valuable feedback on our new Online Home Visiting Professional Development program to ensure it is relevant and powerful for professionals in the field. She lives for that moment when her team members are engaged with their families and see the impact of their work.*





## Our Stories: Building a Stronger Early Childhood Workforce

Home visiting is a powerful early intervention that is proven to increase positive birth outcomes for children, increase children’s literacy and high school graduation rates, and decrease rates of child abuse and neglect.

As impactful as home visiting is for families, the profession faces high turnover and quick burnout due to the emotional demands on home visitors. Professional development instills confidence in home visitors, increases job satisfaction and improves interactions with families, building a better trained, more impactful workforce and better outcomes for children and families.



Expanding on our 30 years of home visiting professional development experience in Illinois, the Ounce made significant progress this year toward offering affordable, high-quality professional development to home visitors nationwide. Seed investments from the Bezos Family Foundation, Conrad N. Hilton Foundation, Joshua J. and Eunice Stone Foundation, Oscar G. & Elsa S. Mayer Family Foundation, and Pritzker Children’s Initiative helped the Ounce pilot our new Online Home Visiting Professional Development program.

This comprehensive program—the first of its kind—enables home visitors across the country to access high-quality training anytime, anywhere. It’s built with the end user in mind, offering practical advice from experts

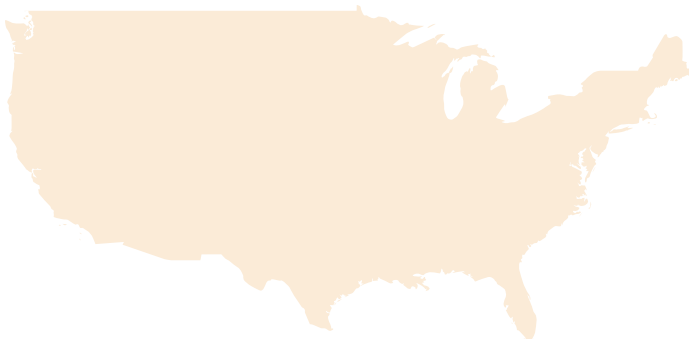
## Our Stories: Building a Stronger Early Childhood Workforce

who have lived the role of home visitor. The courses offer useful tips, tools and real-life examples in a range of formats designed to meet the needs of different learning styles.

In the coming months, we'll complete our pilot of the first learning series. In the first year of the launch, we anticipate reaching 500 home visitors with the online program, expanding our impact to an additional 8,000 children and families across the country.

Home visitors become a part of families' lives, which makes their jobs incredibly rewarding but also incredibly challenging.

Ultimately, we will expand the reach of the Online Home Visiting Professional Development program to 20,000 home visitors across the country like Juliana and her team to drive better outcomes for 1.5 million children and families in poverty. ●



*"I want to lead something positive, something that helps the community."*

DERRICK, HEAD START POLICY COUNCIL MEMBER AND PARENT

CONFIDENCE,  
DREAMS,  
CONNECTIONS,  
& SUCCESS

INCREASED  
ENGAGEMENT &  
PROGRAMS



PARENT  
PARTICIPATION

MONTHLY LEADERSHIP  
OPPORTUNITIES FOR  
PARENTS AT THE  
SCHOOL, LOCAL, STATE  
OR NATIONAL LEVELS

Empowering parents and reaching

**4,000**

children and families through Early Head Start and Head Start and our network of home visiting and doula programs throughout Illinois

**80%**

increase in Educare Chicago Alumni Network

Nurturing strong parent-child bonds across our Educare Learning Network, reaching

**3,000**

children and families daily

**100+**

formal family interactions and events at Educare Chicago annually

## Our Stories: Empowering Parents as Leaders

*“Educare Chicago opened my eyes to what’s available for my son and what’s available for me. When you know better, you do better. It gave me ammunition to be a pushy parent where my son is concerned,” says Monica, parent of a child in the first Educare Chicago graduating class.*

*Nine years after leaving Educare Chicago, mothers of the first graduating class all still point to the school as instrumental in helping steer their children toward success.*

*Parents highlight the supports they received while their children were developing the social-emotional and cognitive skills they needed to be ready for kindergarten. Parents learned tools and strategies to be engaged in and strong advocates for their children’s continued education.*

*“My parenting skills grew from workshops, and I learned what to expect at different ages. I wouldn’t have been as smart of a parent if not for Educare,” says another parent, Camille. She credits her daughter’s success to the support she received as a parent from Educare Chicago.*

*“I didn’t think what Educare offered was possible; I thought I’d be one of the statistics,” says Temeika, a teen mom when she enrolled her daughter in Educare. “The staff at Educare Chicago was there to support me. They gave me the motivation to graduate high school and go to college.” For many parents like Temeika, the school put dreams within reach by highlighting and providing resources and supports available to young parents.*



## Our Stories: Empowering Parents as Leaders

There's a greater chance for children's long-term success when parents are involved in their education. The Ounce two-generation approach honors the important role that parents play and offers support systems to help them inspire what's possible for their children and themselves.

To create new supports and shape existing ones to best fit the needs of parents, the Ounce worked extensively with parents, staff and educators across the Educare Learning Network and our partner Head Start and home visiting programs to inform our thinking. We asked parents questions like: *What challenges do you face daily? What tools would help? Whom do you rely on for advice?* We asked our teachers, family support specialists, doulas and home visitors what strategies are working and what tools they wish they could offer parents.

We then paired these first-hand insights with our family support expertise and research that has been generously supported by the Alvin H. Baum Family Fund, Dr. Scholl Foundation, Northern Trust, Polk Bros. Foundation and W. Clement & Jessie V. Stone Foundation.

We heard our parents ask for stronger home-to-school connections to better reinforce their children's classroom learning at home. From activities in the classroom, to pick-up and drop-off conversations, to parent educational sessions, staff at Educare Schools across the Network continually capitalize on opportunities to engage parents as allies in their children's educational success.

Many of our parents want to connect with parents like themselves—those who may face similar challenges and backgrounds. They want to share with each other, get advice, celebrate achievements and help each other through

## Our Stories: Empowering Parents as Leaders

tough times. The Educare Chicago Alumni Network is one way we help our parents meet each other. This year, membership grew by 80% and now spans from parents of kindergartners to parents of high schoolers.

We found that parents also underestimate the power of their own voices in advocating for their children. To build their confidence and show the impact they can have, we give them tools and training to speak up on behalf of their children and communities. Many of our Head Start and Educare parents joined us in Springfield for our Early Childhood Advocacy Day last April and saw the power their voices could have.

We all seek financial stability and have our own dreams to pursue. One such parent, Beatrice, credits Educare Chicago staff with giving her the confidence and motivation to attend college and open her own successful home day care business. Our family support staff, home visitors, doulas and teachers are helping parents daily as they forge their own paths ahead.



Thanks to seed investments from the Buffett Early Childhood Fund, Bill & Melinda Gates Foundation, Irving Harris Foundation, George Kaiser Family Foundation and W.K. Kellogg Foundation, we are proud to be developing and ultimately providing new tools and supports for parents. By strengthening parents' confidence as their children's first teacher and staunchest advocate, we shape the future for generations of children. ●

6M

children advocated for nationally through the First Five Years Fund

21st

school added to Educare Learning Network



Advocacy partners in  
17 states  
and Washington, DC

Helped secure  
\$650M  
for federal grant  
program



the Ounce

3,000+

program, community  
and opinion leaders  
educated

45,000

additional children  
potentially impacted  
nationwide

3,500

children in Illinois

2,000

children in the  
Educare Learning  
Network



## Our Stories: Leading the National Early Learning Movement

*Like many Early Head Start grantees, Educare Oklahoma City's parent organization, Sunbeam Family Services, wrestled with how to serve more low-income working families struggling to find high-quality care and education for their children.*

*The new federal Early Head Start-Child Care Partnership grants presented an exciting opportunity to reach more children and families with high-quality early education. The federal grants encourage Early Head Start programs and child care programs to partner and jointly provide comprehensive, high-quality services to infants and toddlers and their families. With just over two months to prepare a quality application, Educare Oklahoma City set out to find local child care providers, forge a partnership with them and navigate the application process.*

*With this daunting challenge ahead for Early Head Start programs nationwide, the Educare Learning Network team at the Ounce set out to provide individual consultation, peer-learning opportunities and resources and tools. Educare Oklahoma City as well as other schools across the Network tapped into this assistance to meet the application deadline.*

*"We are so fortunate to have worked with the Ounce. Being able to share ideas and concerns with top experts across the country elevated the conversations and truly moved our partnership program design ahead 10 years!" said Adrienne Elder, Sunbeam Family Services grant writer.*





## Our Stories: Leading the National Early Learning Movement

When President Obama announced a renewed focus on quality preschool in his 2012 State of the Union address, early childhood champions across the country cheered to see early learning on the national stage. The Ounce immediately saw an opportunity to shift the dialogue on early education beyond the traditional preschool years to reflect the broader birth-to-age-five window. We embarked on a journey to educate policymakers on the importance of a child's first three years. Together with the First Five Years Fund, we met with people in high levels of the Obama administration to inform and influence their position. We relentlessly created opportunities for us to share our point of view.

We were excited and proud to note our influence paid off. Early Head Start-Child Care Partnership grants designed to produce better outcomes for children during those critical first three years were included in the White House Plan for Early Education and subsequent budget request.

Securing funding was just the first step; to make an impact, it was essential to structure the grants to best support quality programming. The administration looked to us for strategic guidance, and we created numerous opportunities to share our expertise. We quickly assembled an integrated team of our own program and policy experts and Educare School leaders from across the country to inform the design of this opportunity. We led conversations that engaged leaders from the



## Our Stories: Leading the National Early Learning Movement

federal Administration for Children and Families (ACF), Office of Child Care, Office of Head Start and Educare Schools.

Our leadership came to fruition when the final Early Head Start-Child Care Partnership grant application released last June reflected many key Ounce recommendations. Educare's hallmark model of blending multiple funding streams forms the foundation for the ACF's approach to supporting high-quality service delivery through these partnerships. With \$650 million in funding attached, these new grants are expected to serve nearly 45,000 additional infants and toddlers from low-income families with more comprehensive early care and education services.

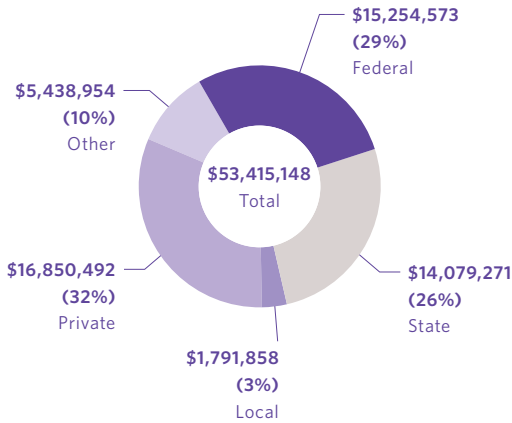
After shaping this federal opportunity, the Ounce intentionally chose to galvanize a collective vision of what quality partnerships would look like. We provided assistance to schools across the Educare Learning Network as well as to Early Head Start partners in Illinois. We are proud to say we harnessed the power of our expertise and national and local partnerships to provide critical technical assistance to increase the quality of applications across the country.

Thanks to the investment of the Grand Victoria Foundation, the Irving Harris Foundation, the Pritzker Children's Initiative and the Robert R. McCormick Foundation, the Ounce helped Early Head Start-Child Care Partnership applicants from across Illinois request funds to serve 3,500 additional children. Across the country, 14 Educare Schools applied for funding to support more than 2,000 additional children through 100 new child care partnerships. ●

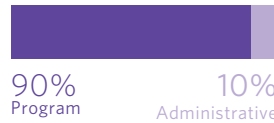
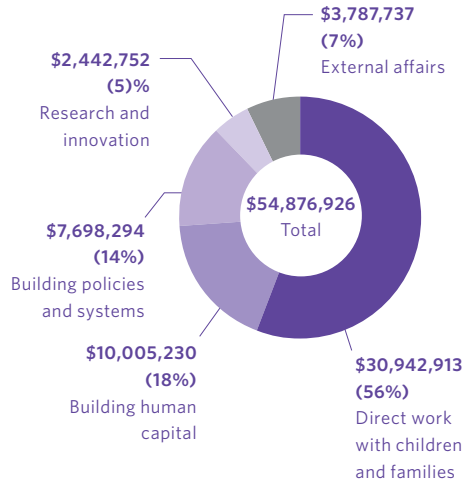
## Finances

Preliminary and unaudited: year ended June 30, 2014

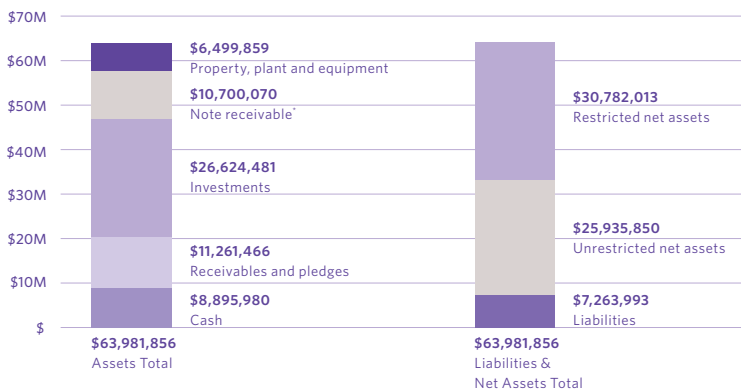
### Revenue



### Expenses



### Financial Position



\*New Markets Tax Credit transaction for Educare of Washington, DC

For more information, visit [theOunce.org/annualreport2014](http://theOunce.org/annualreport2014)

## Ounce of Prevention Fund Donors

### Consecutive Donors

The Ounce is grateful to the following donors for their long-time commitment to the Ounce through consecutive annual donations.

#### DONORS FOR 20 YEARS OR MORE:

Billie Wright Adams, M.D.  
Bill<sup>∞</sup> and Donna Barrows  
Mr. and Mrs. Donald Belgrad  
Blum-Kovler Foundation  
Eloise H. Cornelius  
The Crown Family  
Jim and Susan Florsheim  
Harris Family Foundation/  
Linda and Bill Friend  
Caryn and King Harris  
Katherine P. Harris  
Stephanie and John Harris  
Toni and Dr. Ronald Paul  
Pam and Dr. Joseph Szokol  
Irving Harris Foundation  
Robert Heaton  
Rusty and Samuel Hellman  
Edgar D. and Deborah<sup>∞</sup> Jannotta  
Mr. and Mrs. Robert B. Lifton  
Henry and Elsie Loeb  
Robert R. McCormick Foundation  
Paul Metzger and Sarah Bradley  
Harriet and Ulrich Meyer  
Northern Trust  
Polk Bros. Foundation  
Jill and Ron Rohde  
Dr. Scholl Foundation  
Barbara and Walter Scott  
Anne and John Tuohy  
Bernice Weissbourd

#### DONORS FOR 10 YEARS OR MORE:

Elisabeth and William Adams  
Anonymous (3)  
Lynn Donaldson and Cameron Avery  
Susan and Steve Baird  
Linda and Robert Barrows  
Julie and Roger Baskes  
Judith G. Bertacchi  
John and Vicki Bitner and  
Holly Bitner Duck

The Boeing Company  
Kristi and Kevin Brown  
Jacolyn and John Bucksbaum  
The Buffett Early Childhood Fund  
Sherry and Paul Carbery  
Sara Chaffetz  
CME Group Foundation  
Mitchell Cobey and Janet Reali  
Shari and Mark Coe,  
Coe Capital Management, LLC  
Patricia Cox  
D & R Fund  
Kelly King Dibble  
Claire Dunham  
Early Childhood Funders'  
Collaborative/BUILD  
Lois and Steve Eisen  
Gail and Richard Elden  
Deborah and David Epstein  
Don and Beth Eugenio  
Marshall and Jamee Field Family Fund  
Marilyn and Larry Fields  
Jay and Phylis Frankel  
Bill & Melinda Gates Foundation  
John and Weezie Gates  
Willard G. Gilson and Diana G. Gilson  
Keith and Rodney Goldstein  
Sue and Melvin Gray  
Richard and Mary Gray  
Cabray Haines and David Kiley  
Theresa and Michael Hawley  
Janet and Bob Helman  
Dana Westreich Hirt  
Illinois Action for Children  
Justine Jentes and Daniel Kuruna  
The Joyce Foundation  
JPMorgan Chase & Co.  
George Kaiser Family Foundation  
Anne L. Kaplan  
Mr. and Mrs. Michael Keiser  
Donor Advised Fund  
Alan and Sophia King  
Mary and Donald Kirwan  
Timothy and Elizabeth Landon  
Fifi and Ron Levin  
Elaine and Donald Levinson  
Mr. and Mrs. John S. Lillard  
The Malkin Family  
Oscar G. & Elsa S. Mayer  
Family Foundation  
Rick and Susie Mayer  
Christopher and Amanda Miller  
Gary Missner  
J. Clifford Moos  
Morrison Family Foundation  
Laura and David Nadler  
Judith Neisser  
Kristi Nuelle  
Jerry and Diane<sup>∞</sup> Pekow  
Robert Perelman and Mary Lee Barker  
Martin J. Perry and Barbara J. Williams  
Prince Charitable Trusts  
J.B. and M.K. Pritzker Family Foundation  
Diana and Bruce Rauner  
Raul I. Raymundo  
Pearl H. Rieger  
Julie Roin and Saul Levmore  
The Honorable John<sup>∞</sup> and  
Mrs. Gwendolyn Rogers  
Harvey E. Rosenthal and  
Beverly A. Rosenthal  
The Rothkopf Family  
Cari and Michael J. Sacks  
Bettylu and Paul Saltzman  
Maggie and Eric Scheyer  
Judy and Tom Scorza  
John and Ruth Sellers  
The Earl and Brenda Shapiro Foundation  
Ilene and Michael Shaw Charitable Trust  
Catherine Siegel and Howard Siegel  
Joyce<sup>∞</sup> and Roy Skoog  
Lois and Harrison Steans  
Robin Steans and Leonard Gail  
W. Clement & Jessie V. Stone  
Foundation  
Robert Stillman and Janet Surkin  
Art and Rita Sussman  
Don and Pamela Neal Suter  
Ken and Kathy Tallering  
Coleman Tuggle and Deborah Daro  
Nancy Vincent  
von Weise Associates  
Bernard and Abby Westapher  
The Honorable Bonnie M. Wheaton  
Helen and Sam Zell  
Sheri and Sherwin Zuckerman

+ Includes a generous sponsorship gift for the 13th It's Good Business to Invest in Young Children Annual Luncheon ∞ Deceased

## Lifetime Giving

The Ounce is proud to recognize the following donors for their significant lifetime investment in the Ounce and its mission to help *all* children achieve their potential.

### \$5,000,000 OR MORE

The Buffett Early Childhood Fund  
Bill & Melinda Gates Foundation  
Irving Harris Foundation  
Joan and Irving<sup>™</sup> Harris  
W.K. Kellogg Foundation  
Robert R. McCormick Foundation  
J.B. and M.K. Pritzker Family  
Foundation  
Helen and Sam Zell

### \$1,000,000 TO \$4,999,999

Alliance for Early Success  
Anonymous (2)  
Bezos Family Foundation  
Jacolyn and John Bucksbaum  
CME Group Foundation  
Early Childhood Funders'  
Collaborative/BUILD  
Marilyn and Larry Fields  
Finnegan Family Foundation  
Grand Victoria Foundation  
Harris Family Foundation/  
Linda and Bill Friend  
Caryn and King Harris  
Katherine P. Harris  
Stephanie and John Harris  
Toni and Dr. Ronald Paul  
Pam and Dr. Joseph Szokol  
The Robert Wood Johnson Foundation  
The Joyce Foundation  
George Kaiser Family Foundation  
Anne and Burt<sup>™</sup> Kaplan  
Harriet and Ulrich Meyer  
Diane Rickles Pekow<sup>™</sup>  
Pittway Corporation Charitable  
Foundation  
Polk Bros. Foundation  
Diana and Bruce Rauner  
Michael Reese Health Trust  
Catherine Siegel and Howard Siegel  
W. Clement & Jessie V. Stone  
Foundation

### \$500,000 TO \$999,999

Anonymous  
The Chicago Community Trust  
The Crown Family  
D & R Fund  
Robert Heaton  
Oscar G. & Elsa S. Mayer  
Family Foundation  
Charles Stewart Mott Foundation  
Northern Trust  
The Steans Family

### \$250,000 TO \$499,999

Anonymous  
Alvin H. Baum Family Fund  
Cartwright Foundation  
Evanston Community Foundation  
Heising-Simons Foundation  
Illinois Children's Healthcare  
Foundation  
JPMorgan Chase & Co.  
Louis R. Lurie Foundation  
John D. and Catherine T. MacArthur  
Foundation  
The McCall Family Foundation  
The David & Lucile Packard  
Foundation  
Pew Charitable Trusts/Pre-K Now  
The Albert Pick, Jr. Fund  
Prince Charitable Trusts  
Pritzker Early Childhood Foundation  
The Rothkopf Family  
Cari and Michael J. Sacks  
Diana and Michael Sands  
Dr. Scholl Foundation  
Stranahan Foundation  
Anne and John Tuohy  
Voices for Illinois Children

### \$100,000 TO \$249,999

Allstate Insurance Company  
Anonymous (3)  
AptarGroup Charitable Foundation  
Susan and Steve Baird  
Bill<sup>™</sup> and Donna Barrows  
Prue and Frank Beidler  
Bloomberg Philanthropies  
The Blowitz-Ridgeway Foundation  
BMO Harris Bank  
The Boeing Company  
Helen Brach Foundation  
Brady Education Foundation

Terri and Robert<sup>™</sup> Cohn  
The Commonwealth Fund  
A. Steven and Nancy C. Crown  
The Richard H. Driehaus Foundation  
Educational Foundation of America  
Melissa Sage Fadim, Sage Foundation  
GATX Corporation  
Keith and Rodney Goldstein  
Jim and Brenda Grusecki  
Gustafson Family Charitable Foundation/  
Patti and Allen Gustafson  
Julie and Parker<sup>™</sup> Hall  
Rusty and Samuel Hellman  
Illinois Network of Child Care  
Resource & Referral Agencies  
(INCCRRA)  
The Mayer and Morris Kaplan  
Family Foundation  
Timothy and Elizabeth Landon  
Liz and Eric Lefkofsky  
Martha<sup>™</sup> and Albert H.<sup>™</sup> MacLeod  
Colonel Stanley R. McNeil Foundation  
Paul Metzger and Sarah Bradley  
Earl and Brenda Shapiro Foundation  
Linda and Mike Simon  
Visiting Nurse Association Foundation  
The Oprah Winfrey Foundation  
Woods Fund of Chicago

## Annual Donors

The Ounce honors all our donors for their gifts, pledges and payments this year from July 1, 2013, through June 30, 2014.

### \$1,000,000 AND ABOVE

Bezos Family Foundation  
The Buffett Early Childhood Fund<sup>+</sup>  
Marilyn and Larry Fields<sup>+</sup>  
Irving Harris Foundation<sup>+</sup>  
W.K. Kellogg Foundation  
Diane Rickles Pekow<sup>™+</sup>  
Pritzker Children's Initiative  
Diana and Bruce Rauner<sup>+</sup>  
Helen and Sam Zell<sup>+</sup>

### \$500,000 TO \$999,999

Bill & Melinda Gates Foundation  
George Kaiser Family Foundation  
Robert R. McCormick Foundation<sup>+</sup>  
Catherine Siegel<sup>+</sup>

**\$100,000 TO \$499,999**

Anonymous (2)  
CME Group Foundation+  
Early Childhood Funders'  
Collaborative/BUILD  
Finnegan Family Foundation  
Grand Victoria Foundation  
Jim and Brenda Grusecki+  
Harris Family Foundation+/  
Linda and Bill Friend  
Caryn and King Harris  
Katherine P. Harris  
Stephanie and John Harris  
Toni and Dr. Ronald Paul  
Pam and Dr. Joseph Szokol  
Heising-Simons Foundation  
The Joyce Foundation  
Liz and Eric Lefkofsky+  
The David and Lucile  
Packard Foundation  
W. Clement & Jessie V.  
Stone Foundation  
Stranahan Foundation

**\$50,000 TO \$99,999**

Allstate Insurance Company+  
Anonymous  
Alvin H. Baum Family Fund  
BMO Harris Bank+  
The Boeing Company+  
The Crown Family  
A. Steven and Nancy C. Crown+  
Evanston Community Foundation  
Conrad N. Hilton Foundation  
JPMorgan Chase & Co.+  
Oscar G. & Elsa S. Mayer  
Family Foundation  
Northern Trust+  
Polk Bros. Foundation  
Cari and Michael J. Sacks+

**\$25,000 TO \$49,999**

Anonymous  
The Bluhm Family Charitable Foundation  
The Brinson Foundation  
Crain's Chicago Business+  
D & R Fund  
Daniel P. Haerther Charitable Trust  
Malott Family Foundation  
Prince Charitable Trusts



J.B. and M.K. Pritzker  
Family Foundation+  
The Rothkopf Family+  
The Earl and Brenda Shapiro Foundation  
Splash, A Wrapports Publication+  
William and Kristen Woolfolk

**\$10,000 TO \$24,999**

Anonymous (2)+  
James C. Allen Charitable Foundation  
Paul M. Angell Family Foundation  
Susan and Steve Baird+  
Prue and Frank Beidler+  
Jacolyn and John Bucksbaum+  
Rita and John Canning+  
Jane and David Casper+  
Kelly King Dibble+  
Dr. Scholl Foundation  
Anne and Don Edwards+  
Jacky and Michael Ferro,  
Sun-Times Foundation+  
Kenneth and Anne Griffin+  
Rusty and Samuel Hellman+  
David Herro and Jay Franke+  
Hannah and Gary Hirschberg  
ITW+  
Howard Ellsworth Jessen  
Anne L. Kaplan+  
Dolores Kohl Kaplan+  
Mr. and Mrs. Michael Keiser  
Donor Advised Fund

Lavin Family Foundation+  
Fifi and Ron Levin, Goldman Sachs+  
The Malkin Family+  
Rika and Joe Mansueto  
Laura and David Nadler  
Virginia Oviedo+  
Pierce Family Foundation  
PNC Bank+  
Michael and Tanya Polsky+  
PwC+  
The Randleigh Foundation  
Lydia and Pat Ryan,  
Accelerate Institute+  
Manny Sanchez and Pat Pulido Sanchez,  
Sanchez Daniels & Hoffman LLP+  
Diana and Michael Sands+  
Howard Siegel+  
Julie and Brian Simmons+  
Linda and Mike Simon+  
Souder Family Foundation  
Lois and Harrison Steans+  
Irvin Stern Foundation  
Joshua J. and Eunice Stone Foundation  
Anne and John Tuohy+  
Edward J. Wehmer,  
Wintrust Community Banks+

**\$5,000 TO \$9,999**

The J.R. Albert Foundation  
Anonymous (3)  
Curt R. Bailey, Related Midwest+

+ Includes a generous sponsorship gift for the 13th It's Good Business to Invest in Young Children Annual Luncheon ∞ Deceased

Bill\* and Donna Barrows+  
 Linda and Robert Barrows  
 Julie and Roger Baskes  
 BlueCross BlueShield of Illinois+  
 Eleni and Jimmy Bousis+  
 Denise and David Bunning+  
 Chicago Tribune+  
 Eloise H. Cornelius+  
 Dr. and Mrs. Michael DeVan  
 Melissa and Chris Dunagan  
 Erikson Institute+  
 John and Weezie Gates+  
 Keith and Rodney Goldstein+  
 Leonard C. Goodman  
 Cabray Haines and David Kiley+  
 Jackson National Life  
 Insurance Company  
 Justine Jentes and Daniel Kuruna+  
 Timothy and Elizabeth Landon+  
 Elaine and Donald Levinson+  
 MacLean-Fogg Company+  
 Rick and Susie Mayer+  
 Paul Metzger and Sarah Bradley+  
 Christopher and Amanda Miller+  
 Janet and Andrew Miller+  
 Neal, Gerber & Eisenberg LLP+  
 Sheila and Arthur Nielsen  
 Sharon Oberlander+  
 Michelle Parekh+  
 Peoples Gas+  
 Deborah and Stephen Quazzo+  
 Tom and Cece Ricketts+  
 Jeanne Rogers and Perry Sainati+  
 Jean Schlemmer+  
 Cheryl and Craig Simon+  
 Robin Steans and Leonard Gail

Don and Pamela Neal Suter+  
 Ken and Kathy Tallering+  
 Jill Garling and Thomas Wilson+  
 Sheri and Sherwin Zuckerman+

**\$2,500 TO \$4,999**

Wendy and Jim Abrams+  
 Elaine and Floyd Abramson+  
 Ellen Alberding and Kelly Welsh+  
 Anonymous  
 Arbor Investments+  
 Ariel Investments+  
 Axiom Consulting Partners, LLC+  
 Baxter International Inc.+  
 Karen and Steve Berkowitz+  
 William Blair & Company+  
 Blum-Kovler Foundation  
 The John Buck Company Foundation  
 Marcy and Greg Carlin+  
 CBOE Holdings+  
 CDW+  
 Liz Cicchelli and Rob Buono+  
 Shari and Mark Coe,  
 Coe Capital Management, LLC+  
 Michelle L. Collins+  
 ComEd+  
 Patricia Cox+  
 DLA Piper+  
 Drinker Biddle & Reath LLP+  
 Fran and John Edwardson  
 Deborah and David Epstein+  
 Exelon+  
 Joseph & Bessie Feinberg Foundation+  
 Marshall and Jamee Field Family Fund  
 Jim and Karen Frank+  
 Frequency540+  
 Paula and Tim Friedman  
 Susan and Herb Getz+  
 Gorter Family Foundation  
 Grant Thornton LLP+  
 Brad Henderson, The Boston  
 Consulting Group+  
 Illinois Action for Children+  
 Mary Ittelson+  
 Gerri and David Kahnweiler+  
 Priscilla and Steve Kersten+  
 Flora Lazar and Lee Greenhouse  
 Mesiraw Financial+  
 Peg Moreland+  
 Motorola Solutions Foundation+

Alexandra Nichols+  
 Nicor Gas+  
 Debra Pacchiano, Ph.D., and  
 Jeffrey Wagner+  
 Pine State Trading Co.  
 Quaker Foods North America+  
 Alice B. Rapoport\* and Michael Sachs+  
 RMB Capital+  
 Patrick G. and Shirley W.  
 Ryan Foundation+  
 Jim and Laura Schultz Family+  
 Curt and Cathy Stoelting+  
 Coleman Tuggle and Deborah Daro+  
 Rick Tuttle+  
 Cate and Rick Waddell+  
 Beth and Bruce White+  
 Winston & Strawn LLP+  
 Fanny R. Wurlitzer Foundation

**\$500 TO \$2,499**

Elisabeth and William Adams+  
 Ellen and Michael Alter  
 Anonymous (9)  
 Erika Lautman Bartelstein+  
 Mr. and Mrs. Donald Belgrad  
 Susan Berman and Ray Cahnman  
 John and Vicki Bitner and  
 Holly Bitner Duck  
 Lexis Blitstein+  
 Judith S. and Philip D. Block III  
 Family Fund  
 Norman and Virginia Bobins, The  
 Robert Thomas Bobins Foundation+  
 Mary and Carl Boyer  
 Noelle C. Brock  
 Bill and Joan Brodsky+  
 Ellen and Laurence Bronska  
 Derek Brown and Deborah Hellman  
 Kristi and Kevin Brown+  
 Greg Cameron and Greg Thompson+  
 Megan and Mike Canfield+  
 Carroll Family Foundation  
 Tim and Carol Cawley  
 Myron and Harriett Cholden  
 Joanne Cicchelli and William Singer+  
 Mitchell Cobey and Janet Reali  
 Marilyn Cohen+  
 Carol and Steve Collier+  
 Linda Corwin+  
 Dale & Gensburg, P.C.+



Daniel T. and Andrea S.  
     Derrington Fund+  
 Lynn Donaldson and Cameron Avery  
 Angela M. Duff  
 Claire Dunham  
 Eliza and Timothy Earle  
 Charles B. Edelstein+  
 Lois and Steve Eisen+  
 The David and Lisette  
     Eisendrath Foundation  
 Gail and Richard Elden  
 Laurel Elzinga+  
 Fern Finkel  
 Sonja and Conrad Fischer  
 Jean I. Foley  
 Lula M. Ford+  
 Jay and Phylis Frankel  
 Ian and Patty Frost+  
 Chad and Trisha Fugere  
 William J. Gibbons  
 Willard G. Gilson and Diana G. Gilson  
 Dale and David Ginsburg+  
 Jeannette and Jerry Goldstone  
 Beth Gomberg-Hirsch and  
     Austin Hirsch+  
 Andi and Jim Gordon,  
     The Edgewater Funds+  
 Shelley Gorson and Alan Salpeter+  
 Barbara Graham+  
 Richard and Mary Gray  
 Sue and Melvin Gray  
 Rachel and Devin Gross+  
 Maxwell Gunnill+  
 Martha I. Gutierrez+  
 Hannah's Circle, a giving circle of the  
     One Percent Foundation+  
 Mary Hasten+  
 Robert Heaton+  
 Janet and Bob Helman+  
 Skip and Meg Herman+  
 The Hermann Family  
 Dana Westreich Hirt+  
 Howard Isenberg  
 Edgar D. and Deborah\* Jannotta+  
 Carol and Greg Josefowicz+  
 Suzanne and Dan Kanter+  
 Karen and Matthew Kaplan  
 Karie Katz+  
 Mark and Mary Ann Kaufman+

Barbara and Howard Kaye  
 Dr. Mona Khan and Mr. Shobi Khan+  
 Alan and Sophia King  
 Mary and Donald Kirwan+  
 Nancy and Rik Kohn  
 Martin and Patricia Koldyke+  
 Sherry and Alan Koppel+  
 Beth Kronfeld and Matthew Means+  
 J. Stuart Kruse  
 David and Peggy Kubert+  
 Tracie L. and Larry B. Kugler  
 Kathleen LaPorte+  
 Betsy and Scott Lassar  
 Frances and Elliot Lehman+  
 Libby Keehn Lewis+  
 Mr. and Mrs. John S. Lillard  
 Lofgren Family  
 Peg L. Macaluso and Jeffrey A. Gonyo+  
 Katie and John MacCarthy+  
 Arthur Mead Martin+  
 Michelle McBride+  
 Diane and Tom Meagher+  
 Jennifer Collins Moore  
 J. Clifford Moos  
 Ann T. Moroney  
 Morrison Family Foundation  
 Kim and David Mulligan+  
 Catherine B. and Robert T. Napier+  
 Judith Neisser+  
 Johnnie Newman,  
     Interstate Restoration+  
 Fred Nickl and Kim Hedstrom  
 Janis W. Notz  
 Gail and Jared Nourse  
 Penny and Bill Obenshain+  
 Dr. Susan Offutt  
 Erika Pearsall and Ned Jannotta+  
 Nancy and Marshall Peck+  
 Mona Penner  
 Martin J. Perry and Barbara J. Williams  
 Bruce and Deborah Pfaff  
 Doug Poirier+  
 Raul I. Raymundo+  
 Larry Richman, The PrivateBank+  
 Robet Foundation  
 The Honorable John\* and  
     Mrs. Gwendolyn Rogers  
 Jill and Ron Rohde  
 Julie Roin and Saul Levmore

Lydia and Elias Rosario+  
 Kitty and David Rothschild+  
 John and Amanda Rutledge+  
 Ann and Steve Ryan  
 Hilary and Samuel Sallerson+  
 Bettylu and Paul Saltzman+  
 Maggie and Eric Scheyer+  
 David and Jamie Schwartz+  
 Judy and Tom Scorza+  
 Barbara and Walter Scott  
 John and Ruth Sellers  
 Joan and Jim Shapiro+  
 Diana Morse Simon  
 Merle and Howie Simon  
 Louise K. Smith  
 Andrew G. Spiegel  
 Tammy and Eric Steele+  
 Don and Isabel Stewart+  
 Laurie and Foster Stewart  
 Robert Stillman and Janet Surkin  
 Ellen and Jim Stirling,  
     The Lake Forest Shop+  
 Lauren and Stephen Strelsin+  
 Art and Rita Sussman+  
 Emanuel Tabachnik  
 Michael and Eileen Tarnoff+  
 Leah Taylor+  
 Robin Loewenberg Tebbe and  
     Mark Tebbe+  
 Mr. and Mrs. William R. Tobey  
 Amy and Ken Viellie  
 Nancy Vincent+  
 Karen and Herb Wander+  
 Jennifer Alter Warden+  
 Mr. and Mrs. Marcus D. Wedner  
 Dr. and Mrs. Ralph Weichselbaum+  
 Bernice Weissbourd+  
 Janelle and Terry Weldin-Frisch  
 Robert and Maria Westropp  
 Beth and Richard Wexner+  
 The Honorable Bonnie M. Wheaton  
 Gregory White and Leslie Davis+  
 Susan D. Whiting+  
 Bart Winters  
 Cheryle and John Wittert+  
 Richard and Nadine Woldenberg+  
 Edward and Carol Wroble  
 Laura and Glenn Yaeger  
 Ronna and Steven Zoll+

+ Includes a generous sponsorship gift for the 13th It's Good Business to Invest in Young Children Annual Luncheon   ∞ Deceased



## \$1 TO \$499

Jon Abbott and Shari Malyn  
Billie Wright Adams, M.D.\*  
Carol Adelman  
Adler Family Foundation, a supporting  
foundation of the Jewish Federation  
of Cleveland  
Heidi Albert  
James C. Allen Charitable Foundation  
Ron and Julie Allen  
Leslie Alter  
Danielle Anderson  
Paul and Mary Anderson  
Anonymous (36)  
Lorraine and Brian Arbetter  
Frances E. Baker  
Dolores Barnett  
Kenneth I. Barron and  
Katherine C. Kimbrell  
Holly A. Bartecki  
Michael Bechtel  
Robert Behar and Sharon Flaim  
Rabbi Nehama Benmosche  
Christine and Michael Benoit  
Marjorie Craig Benton and  
Charles Benton  
Jean and John Berghoff  
Judith G. Bertacchi  
The Bett Family  
Helaine A. Billings  
Joan and John Blew  
Oscar C. and Patricia H. Boldt  
Nicole Borovicka  
Nancy and Don Borzak  
Kathleen Boyle  
Jane and Eddie Brandwein  
Colleen Brennan and  
Robert Miltenberger  
Carole R. Brite  
Glen and Betty Broom  
Penny Brown and Jeff Rappin  
Halina Brukner and Philip Hoffman  
Ann and Dick Burnstine  
Cheryl and Robert Byron  
Maureen K. Byron  
Gerrie Canning  
Sarah Cantrell  
Sherry and Paul Carbery  
John and Mary Jo Carlson

Mary Ellen Caron  
Catholic Charities of the  
Archdiocese of Chicago  
Cellar Angels LLC  
Sara Chaffetz  
Judi Chapnick  
Rick and Dee Dee Chesley  
Kate Cicchelli  
Mawiyah Coates  
Christina Codo and Patrick Maloney  
Dr. Jason and the Rev. Daphne Cody  
Natalie and Aaron Cohen  
Bob and Dodie Cook  
John W. and Theresa Curtis  
Melissa K. David  
Jose Luis de la Fuente  
Patricia B. Dempsey  
Nicholas Diamond and Laura Bailyn  
Paul and Beth Dickerson  
Katie Diggins  
DiMeo Schneider & Associates, LLC  
Rosalie Dixler  
Dr. and Mrs. Peter E. Doris  
Michael and Judy Duhl  
Andy and Janet Ingraham Dwyer  
Rick and Hele Effgen  
David Egeland  
Michael and Kathy Elliott  
Deborah Engle  
Lee Ellen and Larry Eppley  
Don and Beth Eugenio  
Tom and Mary Ellen Fahey  
Ty C. Fahner  
Marion and Burt Fainman  
Dave and Margaret Falter  
Irene Farkas-Conn  
Barbara Feig  
Feitler Family Fund  
Sylvia Fergus  
Clairan Ferrono  
Marquia Fields  
Naomi and Arnold Fisher  
Edgar Flagg  
Jim and Susan Florsheim  
Kevin and Diane Foote  
Aimee Foreman  
Adrian Foster  
Zed and Cheryl Francis  
Madeline and Hal Francke

John Freedman and Cecily Baskir  
Jennifer Friedes and Steve Florsheim  
Ron and Pam Futterman  
D.L. Geary Brewing Co., Inc.  
Thomas and Brenda Geers  
Mara Georges  
Elisabeth O. Geraghty  
Lesley Glasgow  
Robert and Linda Glick  
Ethel and Bill Gofen  
Lynn Goldsmith  
Myrna and Jerome Goldstick  
Jill Gomberg  
Good Scout Group  
Lesley Prizant Goodman  
Simone Goodman  
Governors State University  
Laura Graham  
Leslie Graham and Louis Kenter  
Elisha and Nina Gray  
Greenbaum Family Charitable Fund  
Joyce and Russell Greenblatt  
Nanette and Irvin Greif, Jr.  
Ginger and Hollis Griffin  
Ellen and Ed Gualtieri  
Carolyn Guay  
Chris Gustafson  
Marjorie Habermann  
Jessica Schwartz Hahn  
Sana Hakim  
Dr. Vinni Maria Hall  
Peggy Hamil  
Marge Hansen  
Nancy and Tom Hanson  
Anne Harlan and Roger A. Ferlo  
Lynn Harris  
Bronwen and Warren Haskel  
Clare-Ru Haskin  
Sally Havlis  
Theresa and Michael Hawley  
Thomas Hayes  
Lauren Haynes  
Susan and George Heisler  
The Hertwig Family  
Barbara Hertwig  
Patricia Hirt  
Sarah and Brett Holcomb  
Paul and Joni Holinger  
Mr. and Mrs. R. Thomas Howell, Jr.

Maria de Santaren Hubbard  
 Ted R. Jadwin and Ellen J. Morris  
 Dr. Betty James  
 John and Krissan Jennings  
 Thomas and Edith Johnston  
 Jeffrey Kane  
 Lily Kanter  
 Richard and Kathy Kaplan  
 Mr. and Mrs. Y. Kawamoto  
 KEG V Family  
 Sara Kempner  
 Nancy and Michael Kidd  
 Kilbride Family  
 Tom Kilroy  
 Ralph Kinser  
 David Korde and Family  
 Bob Kornecki  
 Nancy and Rick Kreiter  
 Paul and Carla Labriola  
 Linda M. Lane  
 Naomi Leighton  
 Ralph R. Leslie  
 Carole Levine  
 Lisa and Jason Levine  
 Nancy and Arnold Levinson  
 Valerie Lewis  
 Eva F. Lichtenberg  
 Mr. and Mrs. Robert B. Lifton  
 Light Keeper Pro  
 Henry and Elsie Loeb  
 Mary and Charles Lofgren  
 Susan and Stuart Lucas  
 Jim and Liz Luce  
 Claudia Luebbers  
 Ann & Robert H. Lurie Children's  
 Hospital of Chicago  
 Jim and Kitty Mann  
 Anthony R. Manno  
 Nancy and Maurice Marcus  
 Stephanie and Jonathan Marks  
 Catherine and Oscar Marquis  
 Shirley and Walter Massey  
 Linda Matthew  
 Mark T. Mayszak  
 Neill McCarthy  
 Gail F. Pinc McClain  
 Lucinda and Michael McClain  
 Carol A. McErlean

Marc and Laura Mengel  
 Bonnie and Charles Mervis  
 Boyd and Lois Metzger  
 Erica C. Meyer  
 Mike's Hard Lemonade  
 Bart A. Miller  
 Dawn Miller  
 Peggy and David Miller  
 Susan Miller and Allen Batteau  
 Barbara and Larry Millman  
 Michelle and Drew Millman  
 James Mills  
 Michael T. Miske  
 Gary Missner  
 Herbert R. and Paula Molner  
 Peggy A. Montes  
 Susan J. Moran and John McDonough  
 Penni Morganstein and Willa  
 Umansky  
 Corinne S. Morrissey  
 Elaine and Allan Muchin  
 Kevin Mullins  
 David Muschler and Ann Becker  
 Musikgarten of Oak Park  
 Gerry and Nancy Nadig  
 Keyon and Cori Naghavi  
 Amy Weiss Narea

Kit and Sally Narodick  
 Dr. Steven Nasatir  
 Kerri L. Neis  
 North American Breweries  
 Sarah Norris  
 Kristi Nuelle  
 Todd and Erin Ohlms  
 Roberta Olshansky  
 Ruth and Rick Opad and Family  
 Thomas G. Opferman  
 Helene and Aaron Paris  
 Dana Parisi  
 Robin and John Parsons  
 John and Genie Parzakonis  
 Diane Patience  
 Linda and Steve Penn  
 Robert Perelman and Mary Lee Barker  
 Samuel Perry  
 Elizabeth A. Peters  
 Sara Pfaff  
 Francesca Phillips  
 Miriam Pickus  
 Pilsen Wellness Center  
 Barbara J. Pope  
 Sally and Jim Porter  
 Peter and Sandra Prescott  
 Eric S. Prezant and Michelle F. Kavosi



+ Includes a generous sponsorship gift for the 13th It's Good Business to Invest in Young Children Annual Luncheon ∞ Deceased

Lynda Rahal  
Molly Redden  
David and Bonnie Rickles  
Jordan Rickles  
Pearl H. Rieger  
Marilynn and Chuck Rivkin  
Margot Rogers  
Harvey E. Rosenthal and  
Beverly A. Rosenthal  
Barbara Rosenwald  
Olivia Bea Ross Foundation  
Tim and Carol Rounds  
Michael Runser  
Rachel Ruttenberg  
Jeffrey Sangillo  
David A. Scamardo  
Diane Schanzenbach  
Bob Scheele  
Daniel and Marcy Schlessinger  
Ellen Averick Schor  
Bob Schwartz  
Jeannie and Denny Scully  
Mr. and Mrs. Neal L. Seltzer  
Arlene Semel and Brian Snow,  
SemelSnow Interior Design, Inc.  
Daniel Shannon and Deborah  
Hagman-Shannon  
Ilene and Michael Shaw  
Charitable Trust  
Kate M. Sheehy  
Pam Sheffield  
Nancy Shier  
Mr. and Mrs. Michael Sigmond  
Susan Silver  
Arlene Simunek  
Rick and Bonnie Singer  
Arden and Charles Small  
Allen R. Smart  
Jill Dailey Smith  
Maria and Bill Smithburg  
Lisa Snow and Franco Turrinelli  
Scott Solman  
Martha Solomon  
Jacqueline Soltys  
Carollina Song  
Carol S. Sonnenschein  
Elizabeth and Hugo Sonnenschein  
Ellen Soren  
The Spencer Foundation  
David Starr

Sharon and Michael Stein  
Susan Stewart  
Liz Stiffel  
Alexandra Stirling  
Julie and Bob Stracks  
Jonathan Strauss  
Thelma Leola Sturgis  
Rosa M. Subero, M.D.  
Connie and Howard Sulkin  
Terri and Allan Sweig  
Peter F. Talmers  
Joan and Ken Thompson  
Amy S. Timm  
Natalia Torres  
Paul Tough  
Toulouse Family  
Linda and Walter Trittipio  
Laura Tucker  
Donna M. Tuke  
Sheridan Turner —  
Kohl Children's Museum  
Stephen Turow  
David Umansky  
Noren and Richard Ungaretti  
University of Chicago GI Fellows  
Karen Ury  
Eric Vaandering  
Linda Vander Wee  
Mari Pat Varga  
Joseph Victor  
Donna and Curt Voges  
von Weise Associates  
Mary M. Walther  
David and Lucia Webster  
Justin S. Weddle  
I.B. Weil  
Richard Weininger  
Wendy, Ron, Marcus and  
Brandon Weiss  
Bernard and Abby Westapher  
Adam Wexner  
Julia and Dan Wheeler  
Joycelyn Winnecke  
Iris Witkowsky  
Marilyn and David Wittenberg  
Ellen K. Wondra  
Tom Wood  
Caroline Woods  
Claude H. Wright, Wright  
Beverage Distributing

Amie and Brian Wrubel  
Mary and Hossein Youssefi  
Roberta B. Zabel  
Karolyn and Marvin Zelkin  
Eleanor Zoub  
Patrick Zukosky

#### IN-KIND DONORS

Anne-Marie Akin  
AV Chicago  
Axiom Consulting Partners, LLC  
Catalyst Ranch  
Mary Jane Chainski  
Chicago Children's Museum  
Chicago Public Library  
Chicago Public Schools  
Chicago Tribune  
Philip R. Cohen + Associates,  
Architects and Planners  
Teresa Collado  
Cornerstone OnDemand Foundation  
Crain's Chicago Business  
DLA Piper  
Dynamic Solutions Group  
Edlen Electrical Company  
Stacy Ehrlich  
Shauna Ejeh  
David Forero  
Carolyn Frazier  
Michael Garner-Jones  
Heather Gavras  
GO Consulting, LLC  
Rao Goutham  
Stephanie Haywood  
Yvonne Jeffries  
Leroy Jones, J&L Associates  
Management, Inc.  
K&L Gates  
Nisha Kapadia  
Peggy Kierfer  
Julia Labuda  
Dafna Lender  
Microsoft  
Maeve O'Shiel  
Domenica Ottolino  
Parents in the Ounce of  
Prevention Fund Programs  
Amaniyea Payne  
Keith L. Pentz  
Candice Percansky

Sharon J. Perlman  
Salesforce  
Sheppard Mullin  
Craig Sjogerman  
Kathy Slattery  
Spaces For Play, Inc.  
Splash, A Wrapports Publication  
Michelle Talbot, Kidzaw Inc.  
Jill Pilate Thompson  
U.S. Cellular  
VMWare  
Deb Widenhofer

#### **PUBLIC PARTNERS**

Chicago Public Schools  
Illinois Department of Human Services  
Illinois State Board of Education  
U.S. Department of Agriculture  
U.S. Department of Education  
U.S. Department of Health and  
Human Services

#### **Tributes**

##### **IN MEMORY OF**

In memory of Russell Alberding  
Anonymous (5)  
Robert Behar and Sharon Flaim  
Gerrie Canning  
Tim and Carol Cawley  
Bob and Dodie Cook  
Patricia B. Dempsey  
Tom and Mary Ellen Fahey  
Madeline and Hal Francke  
D.L. Geary Brewing Co., Inc.  
Marge Hansen  
Clare-Ru Haskin  
Jeffrey Kane  
KEG V Family  
Kilbride Family  
Neill McCarthy  
Boyd and Lois Metzger  
Mike's Hard Lemonade  
North American Breweries  
Elizabeth A. Peters  
Pine State Trading Co.  
Peter and Sandra Prescott  
Margot Rogers  
Michael Runser

Ann and Steve Ryan  
Bob Scheele  
Scott Solman  
The Spencer Foundation  
Laurie and Foster Stewart  
Richard A. Ungaretti  
Amy and Ken Viellieu  
Donna and Curt Voges  
Tom Wood  
Claude H. Wright, Wright  
Beverage Distributing

In memory of John Baird  
Gerri and David Kahnweiler

In memory of Matthew  
Bucksbaum

David Egeland  
Jean Schlemmer

In memory of Lorayne Cooper,  
Sam Cooper and Fanny Cooper  
Anonymous

In memory of Jerry Feder  
J. Stuart Kruse

In memory of Gene Feldman  
Linda and Mike Simon

In memory of Rose Feldman  
Linda and Mike Simon

In memory of Barbara Galvin  
Lisa and Jason Levine  
Barbara and Larry Millman  
Michelle and Drew Millman

In memory of Norm Matthew  
Linda Matthew

In memory of Chris Pappageorge  
Musikgarten of Oak Park

In memory of Diane Pekow  
Anonymous (8)

Christine and Michael Benoit  
Jean and John Berghoff  
Don and Nancy Borzak  
Jane and Eddie Brandwein  
Penny Brown and Jeff Rappin  
Ann and Dick Burnstine  
John and Mary Jo Carlson  
Melissa K. David  
Michael and Judy Duhl  
Michael and Kathy Elliott



Marion and Burt Fainman  
Barbara Feig  
Elisabeth O. Geraghty  
Lesley Glasgow  
Robert and Linda Glick  
Barbara Graham  
Laura Graham  
Ginger and Hollis Griffin  
Marjorie Habermann  
Bronwen and Warren Haskel  
Sally Havlis  
Susan and George Heisler  
The Hertwig Family  
Barbara Hertwig  
Ted R. Jadwin and Ellen J. Morris  
Lily Kanter  
Mr. and Mrs. Y. Kawamoto  
Tom Kilroy  
David Korde and Family  
Nancy and Rick Kreiter  
Linda M. Lane  
Mary and Charles Lofgren  
Claudia Luebbbers  
Nancy and Maurice Marcus  
Peggy and David Miller  
James Mills  
Penni Morganstein and Willa Umansky  
Kit and Sally Narodick  
Dana Parisi  
Diane Patience  
David and Bonnie Rickles  
Jordan Rickles  
Marilynn and Chuck Rivkin

+ Includes a generous sponsorship gift for the 13th It's Good Business to Invest in Young Children Annual Luncheon ∞ Deceased

Barbara Rosenwald  
Rick and Bonnie Singer  
Arden and Charles Small  
Martha Solomon  
Tammy and Eric Steele  
Sharon and Michael Stein  
Susan Stewart  
Julie and Bob Stracks  
Terri and Allan Sweig  
Joan and Ken Thompson  
Linda and Walter Trittipio  
David Umansky  
University of Chicago GI Fellows  
Karen Ury  
Joseph Victor  
Richard Weinger  
Iris Witkowsky  
Marilyn and David Wittenberg  
Roberta B. Zabel  
Karolyn and Marvin Zelkin

**In memory of Joyce Skoog**  
Anonymous  
Daniel T. and Andrea S. Derrington  
Fund  
Melissa and Chris Dunagan  
Chris Gustafson  
Nancy and Tom Hanson

Sally and Jim Porter  
Jean Schlemmer  
Arlene Simunek  
Bernard and Abby Westapher

**In memory of Harvey Spigal**  
Anonymous (2)  
Ron and Pam Futterman  
Nancy and Arnold Levinson  
Jim and Liz Luce  
Ruth and Rick Opad and Family  
Linda and Steve Penn  
Bob Schwartz  
Linda and Mike Simon  
Merle and Howie Simon  
Jonathan Strauss  
Wendy, Ron, Marcus and  
Brandon Weiss  
Eleanor Zoub

#### **IN HONOR OF**

**In honor of Billie Wright Adams**  
Robert Stillman and Janet Surkin  
Thelma Leola Sturgis  
**In honor of Sue Baird**  
Maureen K. Byron  
Jennifer Alter Warden  
Julia and Dan Wheeler

**In honor of Daniel and Melissa Baskind**  
Linda and Mike Simon  
**In honor of Susan Berman**  
Jacolyn and John Bucksbaum  
Elaine and Donald Levinson  
Maria and Bill Smithburg  
**In honor of Jacolyn Bucksbaum**  
Shelley Gorson and Alan Salpeter  
**In honor of Liz and Rob Cicchelli**  
Laura Tucker  
**In honor of Marlow Colvin**  
Lucinda and Michael McClain  
**In honor of Thomas Cross**  
Carol and Greg Josefowicz  
**In honor of Holly and Larry Erlich**  
Deborah Engle  
Dale and David Ginsburg  
**In honor of Marilyn and Larry Fields**  
Greg Cameron and Greg Thompson  
Lesley Prizant Goodman  
Greenbaum Family Charitable Fund  
Nanette and Irvin Greif, Jr.  
Jim and Brenda Grusecki  
Beth and Richard Wexner  
**In honor of Miriam Arak Freedman  
and Ling-Nan Zou**  
Anonymous  
John Freedman and Cecily Baskir  
**In honor of Bill Friend**  
Elaine and Donald Levinson  
David and Jamie Schwartz  
**In honor of Dale Ginsburg**  
Fern Finkel  
Eva F. Lichtenberg  
**In honor of Gail Gold**  
Nancy and Don Borzak  
**In honor of Keith Goldstein**  
Ron and Julie Allen  
Sharon Oberlander  
**In honor of Sean Gooze**  
Linda and Mike Simon  
**In honor of Lesley Greenberg  
and Jack Epstein**  
Linda and Mike Simon



In honor of Cindy Hallums  
and Jeff Broom  
Glen and Betty Broom  
Mr. and Mrs. Michael Sigmond

In honor of Rusty Hellman  
Pearl H. Rieger  
Art and Rita Sussman

In honor of Ann Kirwan  
Mary and Donald Kirwan

In honor of Kris and George Karnezis,  
Themis and Melodie Karnezis,  
Sophia and Peter Mastro, and  
Dale and Mary Lou Mercer  
John and Genie Parzakonis

In honor of Claudia Levens  
Linda and Mike Simon

In honor of Terrence Lubin  
Rabbi Nehama Benmosche  
Susan Stewart

In honor of the Mehta Family  
Rachel Ruttenberg

In honor of Bonnie and Charles Mervis  
Anonymous

In honor of Barbara Millman  
Linda and Mike Simon

In honor of Sharon Oberlander  
Donna M. Tuke

In honor of Isabel and Charles Polsky  
Karie Katz  
Stephanie and Jonathan Marks

In honor of Diana and Bruce Rauner  
David Herro and Jay Franke  
Flora Lazar and Lee Greenhouse  
Gregory White and Leslie Davis

In honor of Anne and Dick Rothkopf  
Kitty and David Rothschild

In honor of Diana Sands  
Toulouse Family

In honor of Jean Schlemmer  
Kathleen Boyle  
Patricia Hirt

In honor of Kate Siegel  
Anonymous  
Jacolyn and John Bucksbaum  
Maria de Santaren Hubbard  
Nancy and Michael Kidd

In honor of Cheryl Simon  
Michelle McBride  
Linda and Mike Simon

In honor of Linda and Mike  
Simon  
Anonymous  
Ellen and Ed Gualtieri

In honor of Fred Smith  
Linda and Mike Simon

In honor of Barbara Speyer  
Susan Berman and Ray  
Cahnman

In honor of Judith Musick Spiegel  
Andrew G. Spiegel

In honor of Harrison Steans  
J. Clifford Moos

In honor of Sally Tannenbaum  
Susan Silver

In honor of Erica and Patrick Tully  
Anonymous

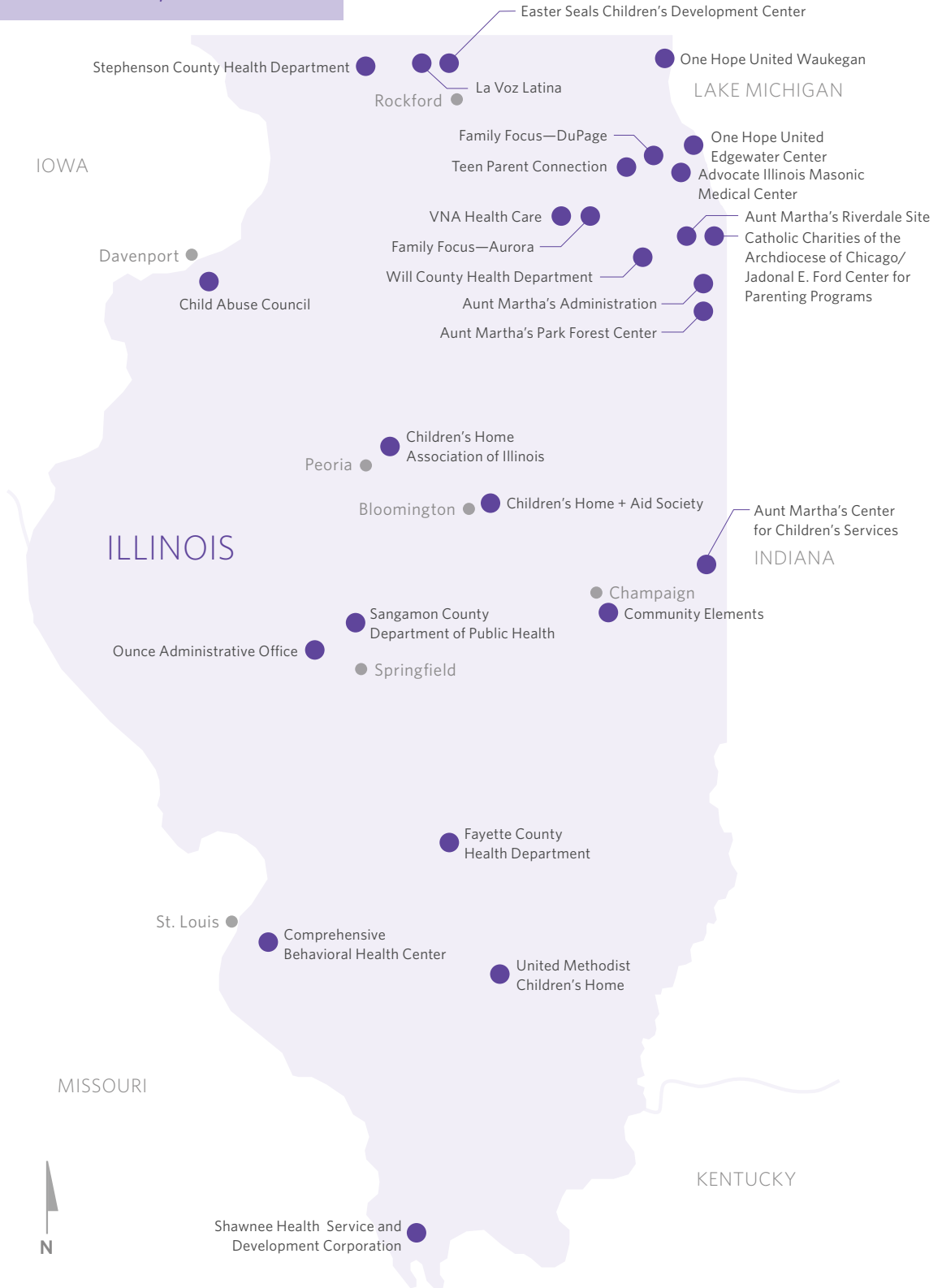
In honor of Anne Tuohy  
Mr. and Mrs. R. Thomas Howell, Jr.  
Arthur Mead Martin  
Gail F. Pinc McClain  
Janis W. Notz  
Daniel Shannon and Deborah  
Hagman-Shannon  
Tammy and Eric Steele  
Julie and Bob Stracks

In honor of Rick Waddell  
Patrick G. and Shirley W. Ryan  
Foundation

In honor of Sean and Anne Warren  
Richard and Nadine Woldenberg



# Greater Illinois Offices, Partners and Sites



Metropolitan Family Services

Casa Infantil

New Moms, Inc.

Christopher House

Children's Place Association  
Family Center

Children's Home + Aid VIVA

Casa Central Community  
Service Center

Casa Central ABC

Children's Place Association  
Home Visiting

YMCA of Metropolitan Chicago  
West Side Healthy Beginnings

Marillac Social Center

CHICAGO LOOP

Ounce Administrative Office

Family Focus—Lawndale

CHICAGO

Pilsen Wellness Center  
Unidos Formando Un Futuro

One Hope United Bridgeport Child  
Development Center II

One Hope United Bridgeport Child  
Development Center I

SGA Youth and Family Services

Centers for New Horizons  
Dawson Center

Ounce Administrative Office

Educare Chicago

Healthy Parents and Babies

Metropolitan Family Services

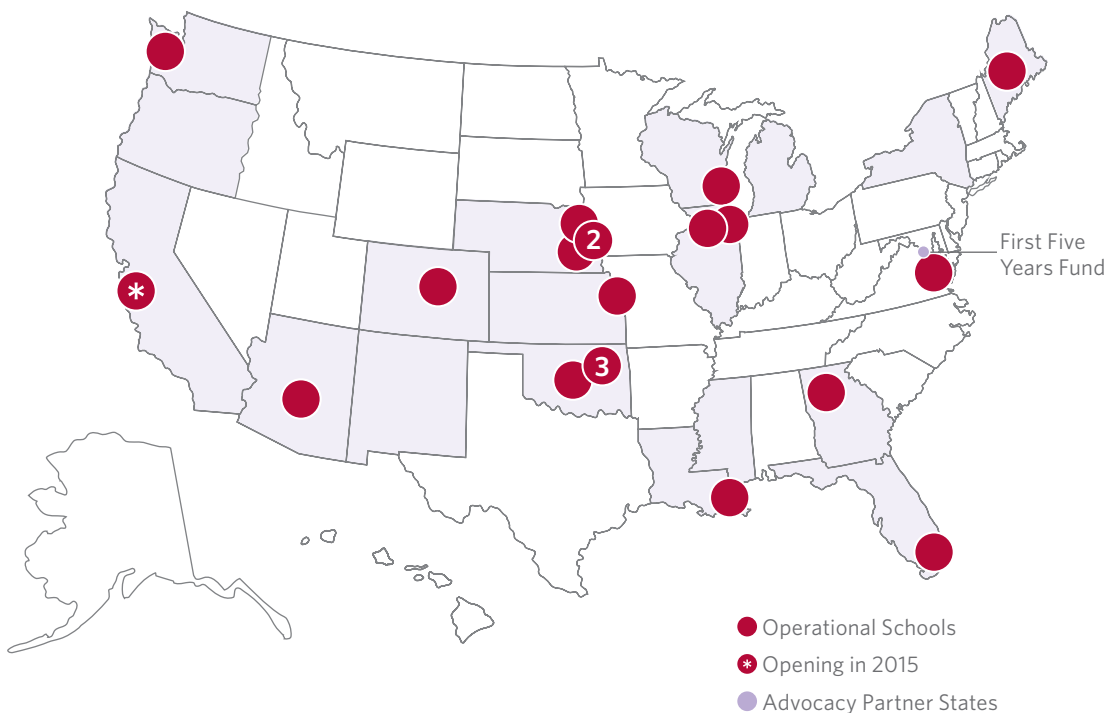
Children's Home + Aid  
Englewood Center

YWCA of Metropolitan  
Chicago Young Parents  
Program

Family Focus—Englewood  
Healthy Families Illinois



National Office, Partners & Sites  
as of September 2014



PARTNERS

- Arizona
- California
- Colorado
- Florida
- Georgia
- Kansas
- Illinois
- Louisiana
- Maine
- Michigan
- Mississippi
- Nebraska
- New Mexico
- New York
- Oklahoma
- Oregon
- Washington
- Washington, DC
- Wisconsin



SCHOOLS

- Arizona (Phoenix)
- Atlanta
- California at Silicon Valley
- Central Maine (Waterville)
- Chicago
- Denver
- Kansas City, KS
- Lincoln, NE
- Miami-Dade
- Milwaukee
- New Orleans
- Oklahoma City
- Omaha at Kellom
- Omaha at Indian Hill
- Seattle
- Tulsa at Kendall-Whittier
- Tulsa at Hawthorne
- Tulsa at MacArthur
- Washington, DC
- West DuPage
- Winnebago, NE



First Five Years Fund

NATIONAL OFFICE

Washington, DC

## Board of Directors

Irving B. Harris

*Founder*

Anne Lea Tuohy

*Chairman of the Board*

Billie Wright Adams, M.D.

Curt R. Bailey

Susan Baird

Francis Beidler, III

Denise A. Bunning

David Casper

Mawiyah Coates

Eloise Cornelius

Deborah Daro, Ph.D.

Kelly King Dibble

Marilyn Fields

Marquia Fields

Lula M. Ford

Bill Friend

Tom Gimbel

Keith Kiley Goldstein

Caryn Harris

Marcia "Rusty" Hellman

Alan King

Timothy J. Landon

Virginia F. Oviedo

Francessca Phillips

Isabel Navarrete Polsky, M.D.

Raul I. Raymundo

Dick Rothkopf

Cari B. Sacks

Manuel "Manny" Sanchez

Diana Sands

Jean Schlemmer

J.M. "Jim" Schultz

Catherine M. Siegel

Harrison I. Steans

Leah Taylor

Helen Zell

Paul Metzger

*Honorary Founding Director*

Bernice Weissbourd

*Honorary Founding Director*



### REMEMBERING JOYCE SKOOG

*February 21, 1940—January 25, 2014*

Joyce was a long-time champion of children and families, with a deep commitment to helping young mothers raise their children with awareness and understanding. Her leadership at the Ounce, as a board member for 15 years and board chair for three, was instrumental in our growth as an organization and as national advocates for at-risk children and families. Joyce understood the crucial role of parents as their child's first teachers and she was

an early supporter of doula and home visiting programs. As board chair, she led the Ounce through unparalleled growth and change — as we strengthened birth-to-five programs in Illinois, expanded our impact in states across the country, and relocated and rebranded the organization.

Joyce and her husband Roy raised their four children in Hinsdale, where she worked with numerous civic and community organizations. She served as the village of Hinsdale's first and only female village president from 1993-1997. Prior to that, Joyce was a village plan commissioner, trustee, fire and police commissioner and a member of the Zoning Board of Appeals. Joyce retired in 2002 as senior vice president for institutional advancement at Aspen Institute following a career in community relations, fund development and communications. Her children proudly remember that despite her many civic and professional commitments, Joyce's family always came first.

Joyce was an invaluable leader for the Ounce for many, many years. We remain deeply grateful for her vision, her leadership and her dedication to helping all children achieve their potential.

## Education & Outreach Committee and Executive Staff

### EDUCATION & OUTREACH COMMITTEE

Hannah Bloom-Hirschberg	Sara Kempner
Megan Canfield	Dan Kuruna
Annie Davis	Christopher D. Miller
Edgar Flagg	Staunton Peck
Rachel Gross	Robyn M. Schuster
Cabray Haines	Cheryl Simon
Deena John	Amy S. Timm

### EXECUTIVE STAFF

Diana Mendley Rauner <i>President</i>	Elliot M. Regenstien <i>Senior Vice President, Advocacy and Policy</i>	Amy Lusk <i>Vice President, Resource and Capacity Building</i>
Sarah Bradley <i>Chief Operating Officer</i>	Cynthia Stringfellow <i>Senior Vice President, Educare Learning Network</i>	Eli Rosario <i>Vice President, Finance</i>
Claire Dunham <i>Senior Vice President, Programs and Training</i>	Susan Ben <i>Vice President, Information Technology and Management</i>	Janelle Weldin-Frisch <i>Vice President, Training</i>
Portia Kennel <i>Senior Vice President, Program Innovation</i>	Shenita Brokenburr <i>Vice President, People</i>	<b>FIRST FIVE YEARS FUND</b>
Anita Puri <i>Chief Marketing Officer</i>	Barbara Hoffman <i>Vice President, Development</i>	Kris Perry <i>Executive Director</i>
Tony Raden <i>Senior Vice President, Research and Policy Initiatives</i>	Ann Kirwan <i>Vice President, Strategy and Partnerships</i>	



For more information about the Ounce of Prevention Fund, follow us on Facebook, Twitter, LinkedIn and Pinterest.



© Copyright 2014 Ounce of Prevention Fund

The Ounce of Prevention Fund gives children in poverty  
the best chance for success in school and in life  
by advocating for and providing the highest quality care  
and education from birth to age five.



Ounce of Prevention Fund  
33 West Monroe Street, Suite 2400  
Chicago, Illinois 60603  
312.922.3863